



# Underwater Mapping

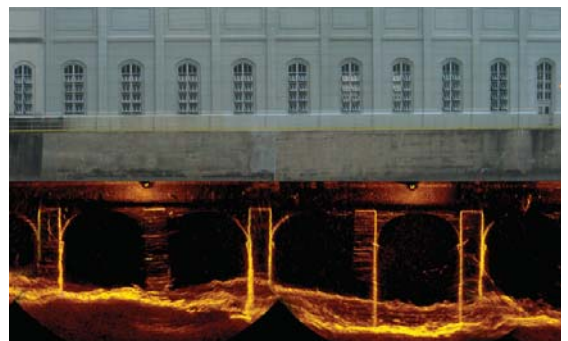
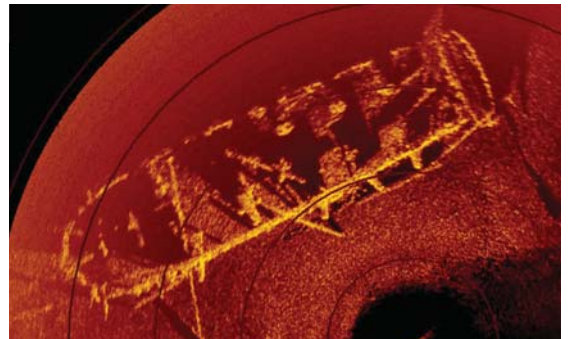
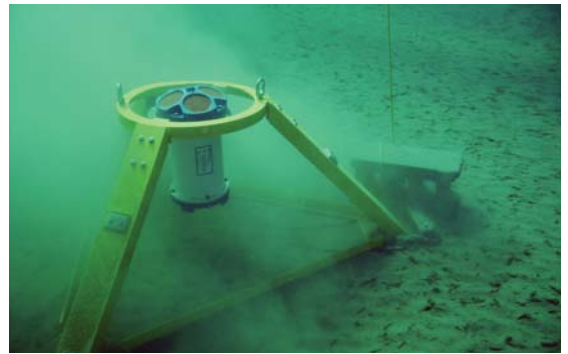
Marine Geophysical and Hydrographic Surveys

ASI provides a complete range of hydrographic, geophysical and visual inspection techniques to conduct underwater investigations. Submerged surface features and targets are located, measured and mapped with precision accuracy in real-time using a combination of geophysical mapping and charting technology.

In-house cartographers and graphic specialists produce quality technical reports (hardcopy and GIS compatible formats) utilizing geophysical data.

ASI's survey vessels are trailerable and equipped with a wide variety of survey equipment packages. In addition to surface vessels, ASI owns and operates a fleet of purpose-built remotely operated vehicles (ROV's) to deploy sonar and video imaging in open water, tunnels and pipelines.

Technical advances in geophysical survey instrumentation and methodologies provide greater efficiency and accuracy in mapping rivers, estuaries, channels, lakes or harbour bottom surfaces.



 **ASI Group**  
[www.asi-group.com](http://www.asi-group.com)

250 Martindale Road,  
St. Catharines, ON Canada L2R 6P9  
Tel: 905-641-0941 Fax: 905-641-1825

